



**STANDENS**



**AXLES**

**Trailer Axles  
and Components  
8,000 LB.**



**Top Quality Trailer Axles & Components**

## **Standen's Warranty**

IMT Standen's Limited Partnership warrants Axle products manufactured or supplied by us to be free from defects in material and workmanship under normal use and service for a period of one year from date of manufacture of the product.

We will repair or replace without charge, shipping included, or at our option give credit for components shown to be out of specifications or defective.

This replacement warranty is limited to parts only and does not include any labour charges, down time costs or consequential costs due to the defective product.

The warranty on our product is void when:

1. Axle capacity is exceeded.
2. The brakes are not adjusted before the trailer is put into use.
3. Products are not installed according to factory recommendations and maintained.
4. Proper maintenance is not carried out.
5. Our products are altered or changed from original factory specifications without our knowledge and consent.
6. Damage occurs due to destructive driving or road conditions.
7. The product sits idle longer than 3 months and is not pre-serviced before being put into service.

This limited Warranty applies to the first use purchaser of the product only.

This limited Warranty is the only Warranty offered by us and therefore no employees, agent, salesperson or other person has the authority to offer or make any other Warranty.

## **Axle Division Return Policy**

AXLES CAN NOT BE RETURNED SPECIAL ORDER PARTS CAN NOT BE RETURNED

RETURNS ARE NOT ACCEPTED AFTER 30 DAYS OF PURCHASE DATE

There is no restocking fee associated with parts returned within 10 DAYS OF PURCHASE however parts returned after 10 days are subject to a 20% restocking fee.

A COPY OF THE ORIGINAL INVOICE MUST  
ACCOMPANY ALL RETURNS

ALL RETURNS MUST BE PREVIOUSLY APPROVED  
WITH AN RGA NO.

PARTS MUST BE RETURNED FREIGHT PREPAID

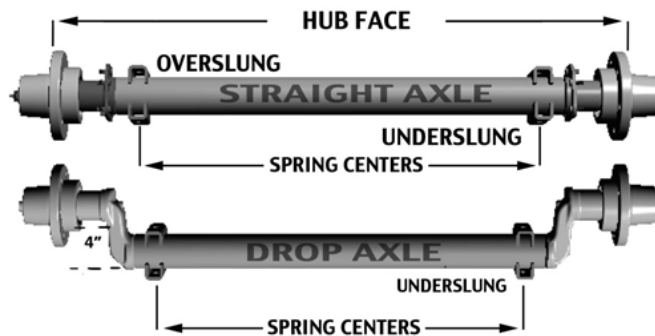
## How to Measure an Axle

There are many ways to measure the length of an axle beam. The most accurate way to measure would be → **hub-face-to-hub-face** and **spring-center-to-spring-center** lengths.

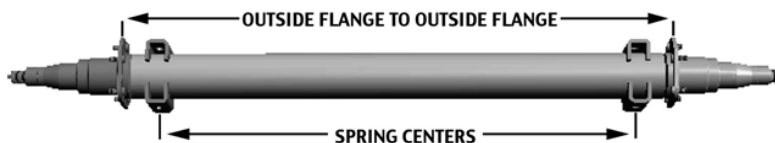
What is the hub face measurement? Hub face is the distance from outside of hub mounting face to outside of hub mounting face. The hub face is also known as the mounting surface where the wheel makes contact with the hub. (See straight axle reference diagram below)

The **spring centers** identify the position of the springs and mounting hardware, as well this should align with the mounting positions on the trailer frame rails.

Please note that the springs can be mounted above (overslung) or below (underslung) the axle. This will raise or lower the axle depending on the configuration.



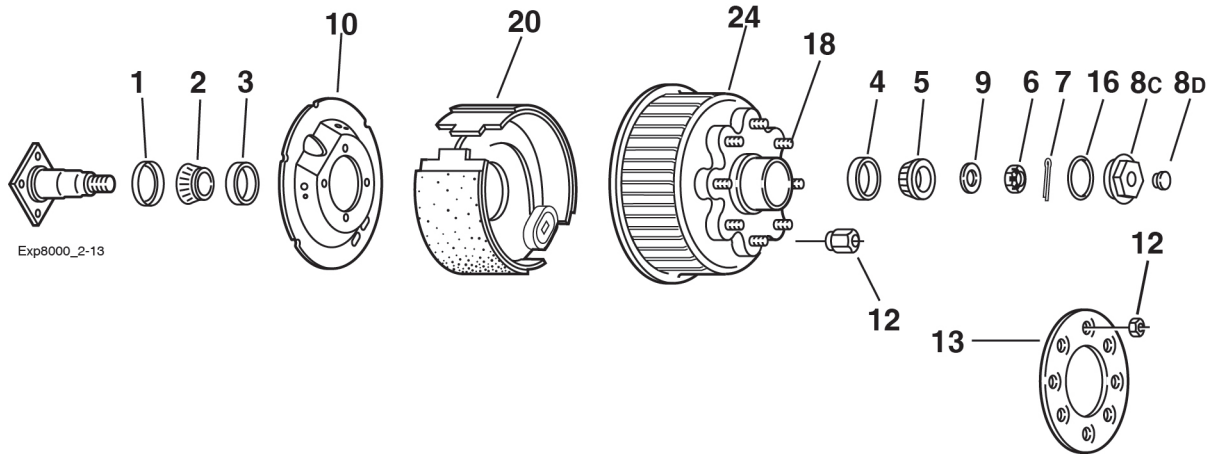
Alternatively - the flange face to flange face measurement can be provided which is measured from the outside of one brake flange to the outside of the opposite one (Where the brakes bolt on) as you see below.



This length may be easy to obtain if you are replacing an axle, but it's important to note that this measurement is not the preferred method for determining which axle will best fit your trailer.

**Hub face & spring center measurements are required before any order will be built.**

## 8,000 LB CAPACITY



### PARTS

Item	Part #	Description
1	SE-16	Seal for Grease Packed
1	10-063	Seal for Oil Bath
2	25580	Inner Bearing Cone
3	25520	Inner Bearing Cup
4	02420	Outer Bearing Cup
5	02475	Outer Bearing Cone
6	821-3	Spindle Nut
7	880-1	Cotter Pin
8C	21-35	Oil Cap
8D	46-32	Oil Cap Plug
9	841-1	Spindle Washer
NS	46-52	Oil Filler Plug
16	10-45	O' Ring for Oil Lube

### 12 1/4" X 3 3/8" BRAKES

Item	Part #	Description
10	36-115-20	Dust Shield
20	K23-434/K23-435	LH/RH Electric Self-Adjust
NS	K23-402/K23-403	LH/RH Hydraulic Self-Adjust Duo Servo

### STUDS & WHEEL NUTS

Item	Part #	Description	Nut Torque
12	WN-6	9/16-18 60° Cone Nut	200 lbs-FT
*12	WN-10	5/8-18 90° Cone Nut	
*13	33-52-1	Clamp Ring	
18	WS-122	9/16-18 Press-in Stud	
18	WS-123	5/8-18 Press-in Stud	
NS	WN-12	5/8-18 Flange Nut	

Note: ABS and DISC brakes available on request

Note: Spindle is not available for resale.

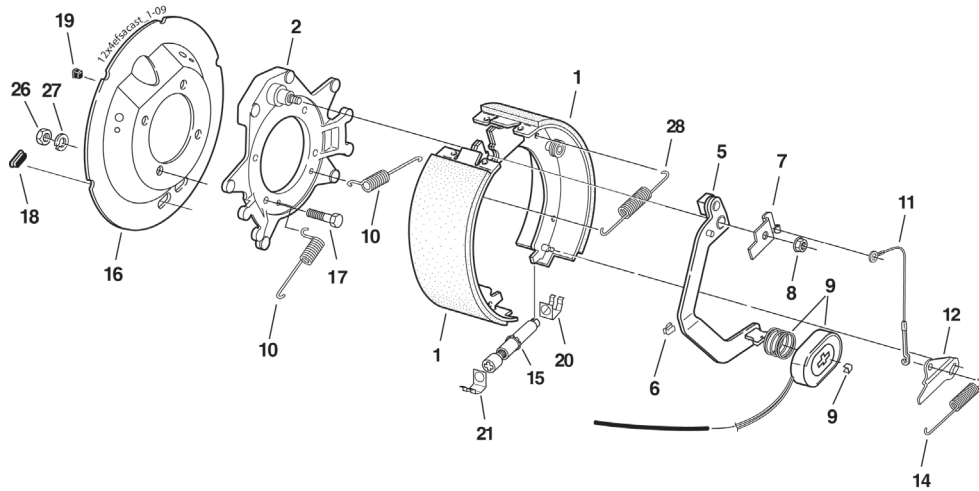
Note: Hubs & Hub Drums sold as a kit. Kit contains seal, inner / outer bearings, caps with plug and 'O' Ring, Wheel Nuts and Hub/Hub Drum cupped and Studded

NS - Not Shown

\* Must use the 90 degree cone nut with the clamp ring. Alternate fastener is just the flange nut.

"Portions of this catalog are copyrighted by Dexter Axle and were used with the expressed authority of Dexter Axle, but Dexter Axle is not responsible for the accuracy of the information contained herein"

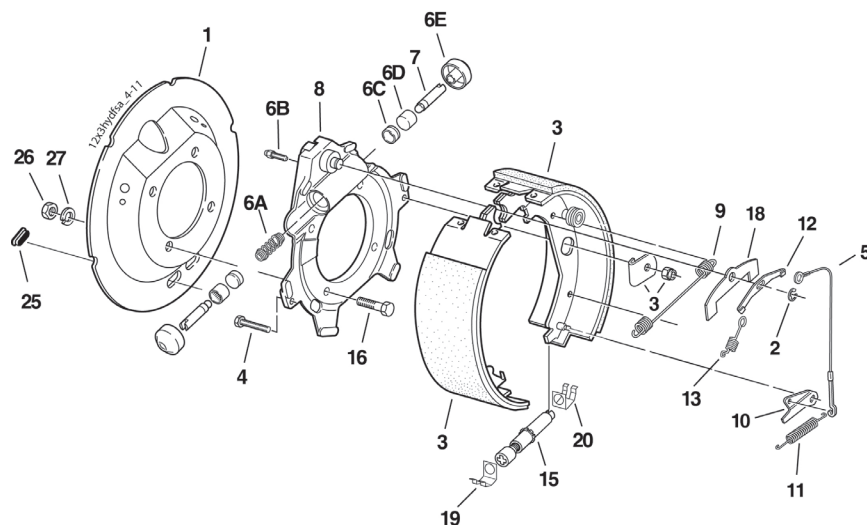
## 12 1/4" X 3 3/8" Brakes



### DXQ ELECTRIC BRAKES & COMPONENTS

Item	Part #	Qty/Brake	Description	Item	Part #	Qty/Brake	Description
0	K23-434	1	LH Complete Brake Assembly (Shown)	10	46-136	2	Centering Spring
0	K23-435	1	RH Complete Brake Assembly	11	71-462	1	Adjuster Cable
1	71-499	1	LH Shoe & Lining Kit Contains:	12	71-464	1	LH Adjuster Lever
			1 - LH Primary Shoe & Lining	13	71-463	1	RH Adjuster Lever
			1 - LH Secondary Shoe & Lining	14	46-137	1	Adjuster Spring
1	71-498	1	RH Shoe & Lining Kit Contains:	15	48-019	1	LH Adjuster Assembly (silver)
			1 - RH Primary Shoe & Lining	15	48-020	1	RH Adjuster Assembly (gold)
			1 - RH Secondary Shoe & Lining	*16	36-115-20	1	Dust Shield
5	47-123-38	1	LH Actuating Arm Assembly	*17	802-4	4	Brake Mounting Bolt
5	47-123-37	1	RH Actuating Arm Assembly	18	46-7	2	Adjuster Slot Plug
6	27-39	3	Wire Clip	19	46-16	1	Wire Grommet
7	71-455-01	1	LH Arm/Shoe Retainer	20	46-133	1	Adjuster Clip (barrel end)
7	71-455-02	1	RH Arm/Shoe Retainer	21	46-132	1	Adjuster Clip (thread end)
9	71-375	1	Magnet Kit Contains:	*26	820-3	4	Brake Mounting Locknut
			1- Magnet	28	46-119	1	Return Spring
			1- Magnet Retainer Clip				
			1- Magnet Spring				

## Hydraulic Brake



Item	Part #	Qty/Brake	Description	Item	Part #	Qty/Brake	Description
0	K23-402	1	LH Complete Brake Assembly FSA DS (shown)	7	54-033	2	Cylinder Push Rod DS (2)
0	K23-403	1	RH Complete Brake Assembly FSA DS	**8	036-064-03	1	Spider Assembly (incl. items #4, 6, 7) DS
*1	36-115-20	1	Dust Shield	9	46-87	1	Retractor Spring
2	69-053	1	Retainer	10	71-464	1	LH Adjuster Lever
3	71-176	1	LH Shoe & Lining Kit Contains: 1- LH Primary Shoe & Lining 1-LH Secondary Shoe & Lining 2-Shoe Hold Down Washer 2- Locknut	10	71-463	1	RH Adjuster Lever
3	71-166	1	RH Shoe & Lining Kit Contains: 1- RH Primary Shoe & Lining 1- RH Secondary Shoe & Lining 2- Shoe Hold Down Washer 2- Locknut	11	46-135	1	LH Adjuster Spring
4	71-113	2	Shoe Hold Down Screw	11	46-134	1	RH Adjuster Spring
5	71-462	1	Adjuster Cable	12	71-456	1	Cable Attachment Bracket
6	71-80	1	Wheel Cylinder Kit (1.00" Bore) Contains: 1- Spring 2- Boot 2- Piston 2- Cup 1- Bleeder Screw	13	43-131-01	1	Extension Spring
				15	48-019	1	LH Adjuster Assembly
				15	48-020	1	RH Adjuster Assembly
				*16	802-4	4	Brake Mounting Bolt
				18	34-062	1	Piston Stop
				19	46-132	1	Adjuster Clip (thread end)
				20	46-133	1	Adjuster Clip (barrel end)
				25	46-7	2	Adjuster Slot Plug
				26	820-3	4	Brake Mounting Locknut

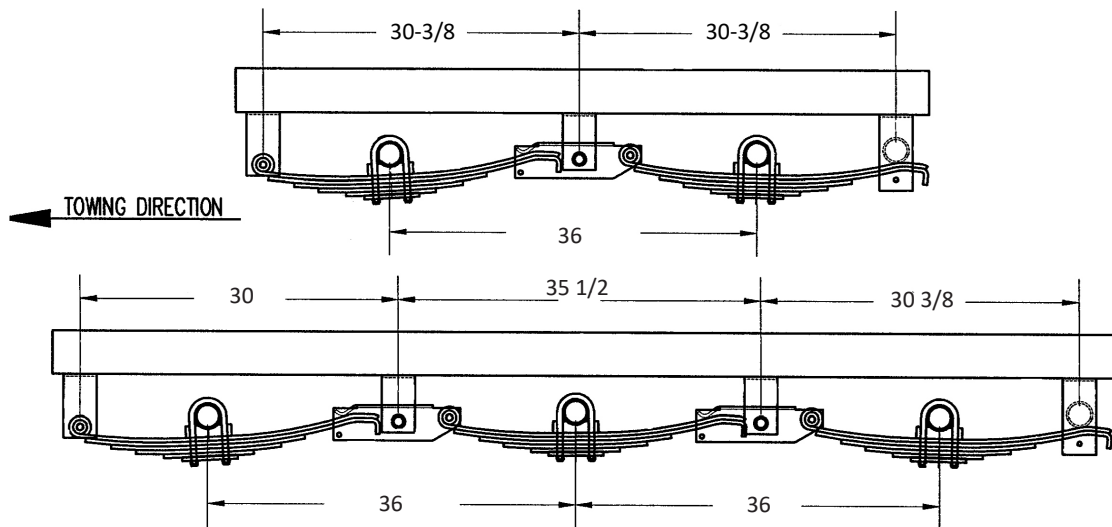
\* Included with complete brake assembly

\*\* Special Order only

"Portions of this catalog are copyrighted by Dexter Axle and were used with the expressed authority of Dexter Axle, but Dexter Axle is not responsible for the accuracy of the information contained herein"

## LEAF SPRING APPLICATION INFORMATION

### 36" SPREAD SLIPPER SPRING SUSPENSION



### SLIPPER SPRINGS

#### Tandem & Triple Hanger Kits # 571-36-HD / 572-36-HD 36" Axle Spread

Part #	Description
28-001-58HD	Front Hanger
29-001HD	Centre Hanger
30-028HD	Rear Hanger
541-1	Equalizer (For Slipper Spring)
6-111	7/8" Lock Nut
7-1-1	7/8" Equalizer Bolt
800-1	3/8" x 3 1/2" Bolt
801-2	5/8" Suspension Bolt - Spring Eye
801-4	9/16" X 3 1/2" Suspension Bolt
820-1	3/8" Nylock Plated
820-4	9/16" Lock Nut
820-5	5/8" Lock Nut

Some combinations of hangers and spring mounting may result in insufficient bump clearance.

## WHEELS

Part #	Rim Size	Bolt Circle	Offset	Capacity & psi	Type
15-166-8-1	16X 6K	8 on 6.50		3315 @ 80psi	Eight Spoke
16-166-8-1	16X 6K	8 on 6.50	.50in	3315 @ 80psi	Mini-Mod

## WHEELS & TIRE ASSEMBLIES

Part #	Rim Size	Bolt Circle	Offset	Capacity & psi	Load Range	Type
24-215175-8OUT	17.5"	8 on 6.50	0.50 in	4810 @ 125psi		Conventional
24-23580E16-8D	16"	8 on 6.50	0	3100 @ 85psi	E	Conventional
24-23585E16-8D	16"	8 on 6.50	0	3200 @ 80psi Dual	E	Conventional
25-23580E16-8	16"	8 on 6.50	0	3520 @ 80psi	E	Eight Spoke
25-23585E16-8	16"	8 on 6.50	0	3640 @ 80psi	E	Eight Spoke
26-23585E16-8	16"	8 on 6.50	0	3520 @ 80psi	E	Modular
26-23585E16-8	16"	8 on 6.50	0	3640 @ 80psi	E	Modular
26-23585F16-8	16"	8 on 6.50	0	3960 @ 95psi	E	Modular
27-23585E16-8	16"	8 on 6.50	0	3640 @ 80psi	E	Aluminum
27-23585F16-8	16"	8 on 6.50	0	3960 @ 95psi	F	Aluminum







## CONTACT NUMBERS



### HEAD OFFICE & MAIN PLANT

1222 - 58th Avenue S.E.  
P.O. Box 67, Station "T"  
Calgary, Alberta  
Canada T2H 2G7

Toll Free: 1-800-663-7800  
Phone: (403) 258-7800  
Fax: (403) 258-7897  
Toll Free Fax: 1-866-258-7897

[www.standens-axles.com](http://www.standens-axles.com)

### DISTRIBUTION CENTRES

#### EDMONTON

18922 - 111 Avenue NW  
Edmonton, AB  
Canada T5S 0B6  
Phone: (780) 430-7130  
Fax: (780) 430-7037

#### VANCOUVER

1880 96 Avenue  
Surrey, BC  
Canada V4N 3R1  
Toll Free: 1-800-665-9633  
Phone: (604) 888-7287  
Fax: (604) 888-7260

#### BOUCHERVILLE

220 Industriel Boulevard  
Boucherville, QC  
Canada J4G 2X4  
Toll Free: 1-866-674-0855  
Phone: (450) 674-0855  
Fax: (866) 674-0938

### DISTRIBUTION CENTRES

#### TORONTO

1400 Meyerside Drive  
Mississauga, ON  
Canada L5T 1H2  
Toll Free: 1-800-567-7800  
Phone: (905) 362-1901  
Fax: (905) 362-1906

#### INDIANA

6450 English Avenue  
Indianapolis, IN  
U.S.A. 46219  
Toll Free: 1-800-851-2254  
Phone: (317) 423-1471  
Fax: (317) 423-1925

### SERVICE CENTRE

1222 - 58th Avenue S.E.  
P.O. Box 67, Station "T"  
Calgary, Alberta  
Canada T2H 2G7  
Toll Free: 1-800-663-7800  
Phone: (403) 258-7800  
Fax: (403) 258-7897  
Toll Free Fax: 1-866-258-7897