



STANDENS

AXLES

**Trailer Axles
and Components
2,000 LB.**



Top Quality Trailer Axles & Components

Standen's Warranty

IMT Standen's Limited Partnership warrants Axle products manufactured or supplied by us to be free from defects in material and workmanship under normal use and service for a period of one year from date of manufacture of the product.

We will repair or replace without charge, shipping included, or at our option give credit for components shown to be out of specifications or defective.

This replacement warranty is limited to parts only and does not include any labour charges, down time costs or consequential costs due to the defective product.

The warranty on our product is void when:

1. Axle capacity is exceeded.
2. The brakes are not adjusted before the trailer is put into use.
3. Products are not installed according to factory recommendations and maintained.
4. Proper maintenance is not carried out.
5. Our products are altered or changed from original factory specifications without our knowledge and consent.
6. Damage occurs due to destructive driving or road conditions.
7. The product sits idle longer than 3 months and is not pre-serviced before being put into service.

This limited Warranty applies to the first use purchaser of the product only.

This limited Warranty is the only Warranty offered by us and therefore no employees, agent, salesperson or other person has the authority to offer or make any other Warranty.

Axle Division Return Policy

AXLES CAN NOT BE RETURNED SPECIAL ORDER PARTS CAN NOT BE RETURNED

RETURNS ARE NOT ACCEPTED AFTER 30 DAYS OF PURCHASE DATE

There is no restocking fee associated with parts returned within 10 DAYS OF PURCHASE however parts returned after 10 days are subject to a 20% restocking fee.

A COPY OF THE ORIGINAL INVOICE MUST
ACCOMPANY ALL RETURNS

ALL RETURNS MUST BE PREVIOUSLY APPROVED
WITH AN RGA NO.

PARTS MUST BE RETURNED FREIGHT PREPAID

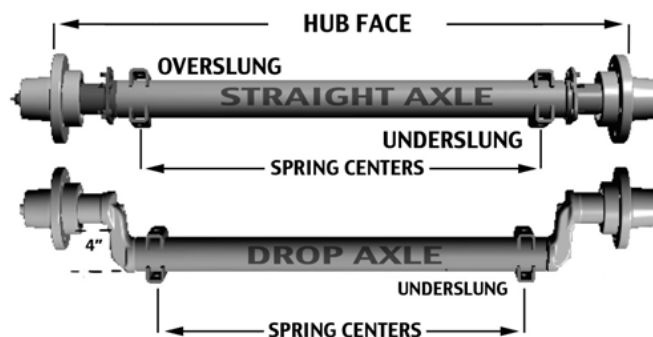
How to Measure an Axle

There are many ways to measure the length of an axle beam. The most accurate way to measure would be → **hub-face-to-hub-face** and **spring-center-to-spring-center** lengths.

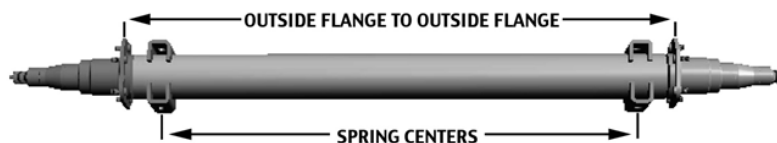
What is the hub face measurement? Hub face is the distance from outside of hub mounting face to outside of hub mounting face. The hub face is also known as the mounting surface where the wheel makes contact with the hub. (See straight axle reference diagram below)

The **spring centers** identify the position of the springs and mounting hardware, as well this should align with the mounting positions on the trailer frame rails.

Please note that the springs can be mounted above (overslung) or below (underslung) the axle. This will raise or lower the axle depending on the configuration.



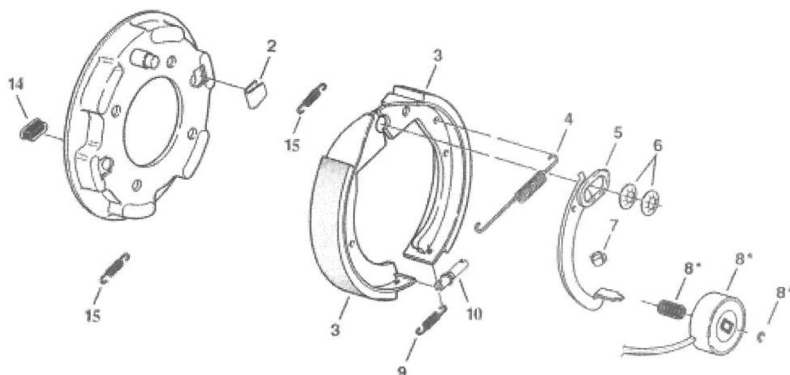
Alternatively - the flange face to flange face measurement can be provided which is measured from the outside of one brake flange to the outside of the opposite one (Where the brakes bolt on) as you see below.



This length may be easy to obtain if you are replacing an axle, but it's important to note that this measurement is not the preferred method for determining which axle will best fit your trailer.

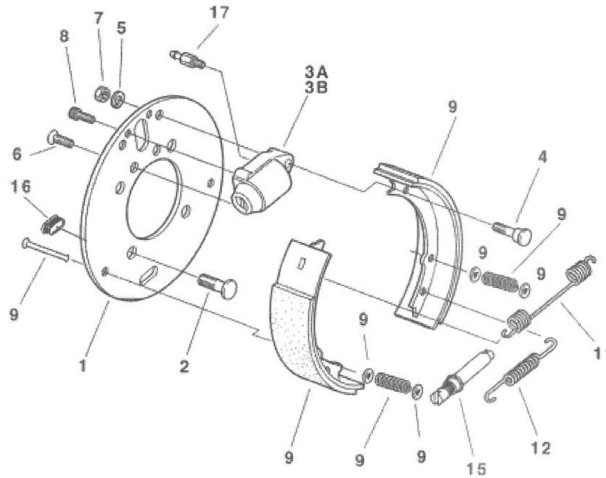
Hub face & spring center measurements are required before any order will be built.

7 X 1 1/4" Electric Brake



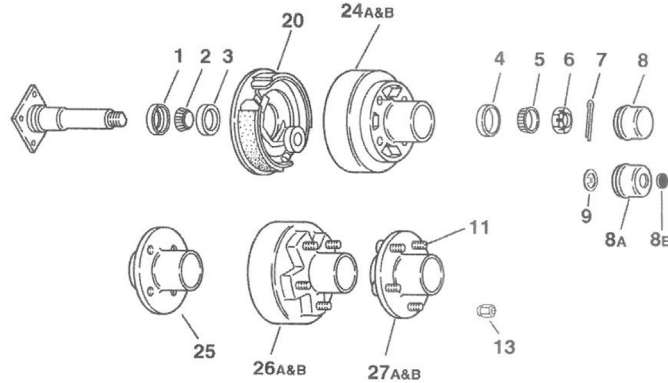
Item	Part #	Qty/Brk	Description
2 & 4	12-709	1	LH Complete Brake Assembly
	12-710	1	RH Complete Brake Assembly
	71-361	1	Spring Kit containing:
		1	#046-023-00 Shoe Hold Down Spring
3	71-45	1	#046-024-00 Retractor Spring
		1	Shoe & Lining Kit containing:
		1	#040-125-00 Primary S&L
		1	#040-049-00 Secondary S&L
5	47-114-01	1	LH Actuating Lever Arm
	47-115-01	1	RH Actuating Level Arm
6	46-030-00	2	Anchor Post Clip
7	27-005-00	1	Wire Clip
8	71-57	1	Magnet Kit containing:
		1	#042-134-00 Magnet
		1	#046-121-00 Magnet Clip
		1	#046-086-00 Magnet Spring
9 & 10	71-323	1	Adjusting Spring Kit
		1	#046-022-00 Adjusting Screw Spring
		1	#043-021-00 Adjusting Screw
		1	Plug
14	46-007-00	1	Plug
15	46-114-00	2	Shoe Centering Spring

7 X 1 3/4" Hydraulic Brake



Item	Part #	Qty/Brk	Description
	13-711	1	LH Complete Brake Assembly
	13-712	1	RH Complete Brake Assembly
1	N/A	1	Backing Plate
2	N/A	4	Mounting Stud - Press-in
3A & 3B	54-80-03	1	Wheel Cylinder Assembly - LH - Dexter
	54-80-04	2	Wheel Cylinder Assembly - RH - Dexter
4	N/A	1	Anchor Post
5	N/A	1	Lock Washer
6	N/A	1	Counter Sunk Cap Screw
7	N/A	1	Hex Nut
8	N/A	1	Socket Head Cap Screw
9	71-466	1	Shoe & Lining Kit - Dexter - containing
		1	#040-327-01 Primary S&L
		1	#040-328-01 Secondary S&L
		2	#046-006-00 Shoe Hold Down Spring
		4	#035-001-00 Shoe Hold Down Spring
		2	#049-014-00 Hold Down Pin
11	46-126	1	Retractor Spring
12	46-127	1	Adjusting Screw Spring
15	43-29	1	Adjuster Screw Assembly
16	46-7	1	Adjuster Slot Plug

2,000 LB. CAPACITY S-20 - BTR HUB GROUP



Standard Grease Lube Parts

Item	Part #	Description	Item	Hubs Part #	Description	Bolt Circle
	602	Bearing Kit - 1 Hub	25	8-441	Plain Hub - tapped	4 on 4.00
1	10-9	10-9 Grease Seal	24A	9-441	Hub & Drum - tapped	4 on 4.00
2	L44649	Inner Bearing Cone			for use w/electric brakes only	
3	L44610	Inner Bearing Cup	24B	9-441H	Hub & Drum - tapped	4 on 4.00
4	L44610	Outer Bearing Cup			for use w/hydraulic brakes only	
5	L44649	Outer Bearing Cone	27A	8-451	Plain Hub - tapped	5 on 4.50
6	821-3	Spindle Nut			5 1/2" dia. flange for 8"	
7	880-1	Cotter Pin (not used with E-Z Lube)	27B	8-451-LD	Plain Hub -studded	5 on 4.50
8	DC-11	Grease Cap			6 1/2" dia. flange for 12" & 13" wheels	
8A	DC-11A	Grease Cap E-Z Lube	26A	9-451	Hub & Drum - studded	5 on 4.50
8B	85-1	Rubber Plug for E-Z Lube			for use w/electric brakes only	
9	841-5	Tang Washer for E-Z Lube	26B	9-451H	Hub & Drum - studded	5 on 4.50
					for use w/hydraulic brakes only	

Brakes

Item	Part #	Description
20	12-709	LH 7x1 1/4 Electric
20	12-710	RH 7x1 1/4 Electric
ns	13-711	LH 7x1 3/4 Hydraulic Uni-servo
ns	13-712	RH 7x1 3/4 Hydraulic Uni-servo

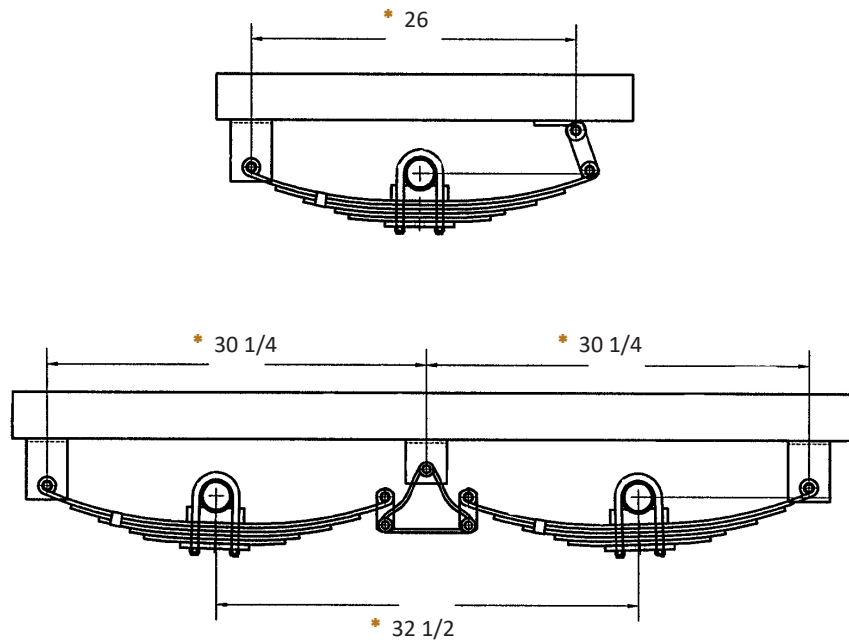
Studs, Bolts & Wheel Nuts

Item	Part #	Description
ns	WB-30	1/2-20 Bolt - 90 Deg. Taper
ns	WB-40	1/2-20 Bolt - 60 Deg. Taper
11	DE-04	1/2-20 Double Ended Wheel Stud
13	WN-2	1/2-20 Wheel Nut



LEAF SPRING APPLICATION INFORMATION

DOUBLE EYE SPRING SUSPENSION



* Measurements will be dependent on spring used

Single Hanger Kits Part # 579-0

Part #	Capacity/Spring
540-14	Front Hanger
540-9	Rear Hanger Eye
545-3	Shackle Strap
801-1	9/16 Shackle Bolt
810-2	7/16 Flanged Lock Nut

Double Eye Springs

Part #	Capacity/Spring
5015-3	675 lbs.
5015-4	900 lbs.
5015-5	1000 lbs.

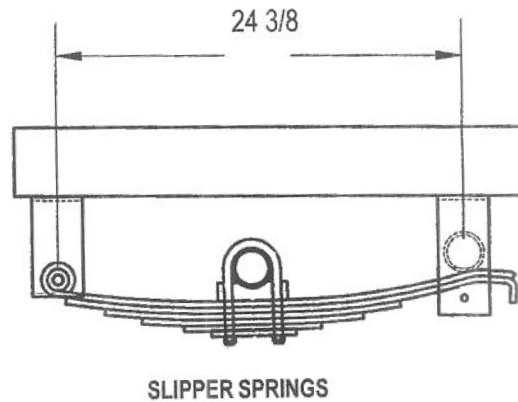
Tandem Hanger Kits Part # 577-0

Part #	Capacity/Spring
540-2	Front and Rear Hanger
540-14	Centre Hanger
543-0	Equalizer
545-225	Shackle Strap
801-1	9/16 Shackle Bolt
810-2	7/16 Flanged Lock Nut

Some combinations of hangers and spring mounting may result in insufficient clearance

LEAF SPRING APPLICATION INFORMATION

SLIPPER SPRING SUSPENSION



Spring

Part #	Capacity/Spring
BT25-6	500 lbs.
BT25-9	750 lbs.
BT25-15	1200 lbs.

Single Hanger Kits Part #580

Part #	Description
540-14	Front Hanger
540-15	Rear Hanger Eye
801-1	9/16 Shackle Bolt
810-2	7/16 Flanged Lock Nut
	3/8 x 3 1/2 Bolt
	3/8 Lock Nut

Some combinations of hangers and spring mounting may result in insufficient bump clearance

Wheel & Tire Assemblies
See Attached page

2000

Wheels

Part #	Rim Size	Bolt Circle	Offset	Capacity & psi	Type
15-1345-5-1	13 x 4 1/2JJ	5 on 4.50		1360@50	Eight Spoke

Wheel and Tire Assemblies

Part #	Rim Size	Bolt Circle	Offset	Capacity & psi	Load Range	Type
24-480C8-4	8"	4 on 4.00		760 @ 90psi	C	Conventional
24-480C8-5	8"	4 on 4.00		0 760 @ 90psi	C	Conventional
24-570C8-4	8"	4 on 4.00		0 910 @ 75psi	C	Conventional
24-570C8-5	8"	4 on 4.00		0 910 @ 75psi	C	Conventional
24-530C12-4	12"	4 on 4.00		0 1050 @ 80psi	C	Conventional
24-530C12-5	12"	5 on 4.50		0 1050 @ 80psi	C	Conventional
25-17580C13-5	13"	5 on 4.50		0 1360 @ 50psi	C	Spoke
27-17580C13-55	13"	5 on 4.50		0 1360 @ 50psi	C	Aluminum





CONTACT NUMBERS



HEAD OFFICE & MAIN PLANT

1222 - 58th Avenue S.E.
P.O. Box 67, Station "T"
Calgary, Alberta
Canada T2H 2G7

Toll Free: 1-800-663-7800
Phone: (403) 258-7800
Fax: (403) 258-7897
Toll Free Fax: 1-866-258-7897

www.standens-axles.com

DISTRIBUTION CENTRES

EDMONTON

18922 - 111 Avenue NW
Edmonton, AB
Canada T5S 0B6
Phone: (780) 430-7130
Fax: (780) 430-7037

VANCOUVER

1880 96 Avenue
Surrey, BC
Canada V4N 3R1
Toll Free: 1-800-665-9633
Phone: (604) 888-7287
Fax: (604) 888-7260

BOUCHERVILLE

220 Industriel Boulevard
Boucherville, QC
Canada J4G 2X4
Toll Free: 1-866-674-0855
Phone: (450) 674-0855
Fax: (866) 674-0938

DISTRIBUTION CENTRES

TORONTO

1400 Meyerside Drive
Mississauga, ON
Canada L5T 1H2
Toll Free: 1-800-567-7800
Phone: (905) 362-1901
Fax: (905) 362-1906

INDIANA

6450 English Avenue
Indianapolis, IN
U.S.A. 46219
Toll Free: 1-800-851-2254
Phone: (317) 423-1471
Fax: (317) 423-1925

SERVICE CENTRE

1222 - 58th Avenue S.E.
P.O. Box 67, Station "T"
Calgary, Alberta
Canada T2H 2G7
Toll Free: 1-800-663-7800
Phone: (403) 258-7800
Fax: (403) 258-7897
Toll Free Fax: 1-866-258-7897